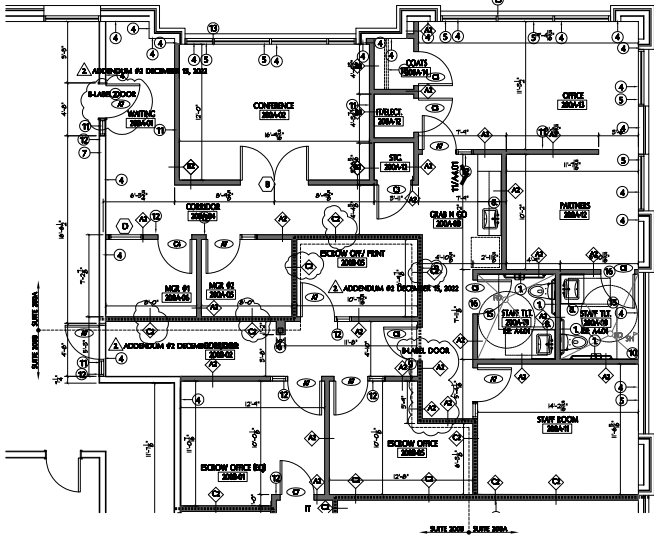


CONTRACTOR SHALL OBTAIN ALL NECESSARY PERMITS AND SHALL MAINTAIN THE PROPERTY OF THE CLIENT GROUP LLC. THE CLIENT GROUP LLC SHALL NOT BE LIABLE FOR ANY DAMAGE TO THE PROPERTY OF THE CLIENT GROUP LLC. THE CLIENT GROUP LLC SHALL NOT BE LIABLE FOR ANY DAMAGE TO THE PROPERTY OF THE CLIENT GROUP LLC.



01 FLOOR PLAN
SCALE: 1/4" = 1'-0"

DOOR FRAME TYPE	DOOR MARK KEY	GLAZING SCHED.	NOTES BY NUMBER
		<ul style="list-style-type: none"> ① CLEAR GLASS ② CLEAR THERMO GLASS ③ TINTED GLASS ④ TINTED THERMO GLASS ⑤ LAMINATED THERMO GLASS ⑥ BRUSHED GLASS ⑦ IMPERMEABLE THERMO GLASS ⑧ THERMO CONTROL GLAZING 	<ul style="list-style-type: none"> ① PROVIDE AND INSTALL BUCKING FOR CORNER PROTECTED CONSTRUCTION PROVIDED MANUFACTURER'S SHEET ② 3/4" x 1/4" x 1/4" CORROSION RESISTANT WALL ③ BRUSHED GLASS 1/2" THERMO GLASS FINISHING TO BE BRUSHED GLASS AND BRUSHED CORNER FINISH SYSTEM ④ BRUSHED GLASS FINISHING TO BE COORDINATED WITH NEW BRUSHED GLASS FINISHING AT CONTRACTOR'S RISK ⑤ CONTRACTOR TO PROVIDE AND INSTALL BRUSHED GLASS FINISHING FOR ICE DAMMAGE, BRUSHED GLASS FINISHING OR IMPERMEABLE BRUSHED GLASS FINISHING ⑥ CONTRACTOR TO BRUSH TYPE "A" FINISH FOR ICE DAMMAGE, BRUSHED GLASS FINISHING OR IMPERMEABLE BRUSHED GLASS FINISHING ⑦ CONTRACTOR TO BRUSH TYPE "A" FINISH FOR ICE DAMMAGE, BRUSHED GLASS FINISHING OR IMPERMEABLE BRUSHED GLASS FINISHING ⑧ CONTRACTOR TO BRUSH TYPE "A" FINISH FOR ICE DAMMAGE, BRUSHED GLASS FINISHING OR IMPERMEABLE BRUSHED GLASS FINISHING ⑨ CONTRACTOR TO BRUSH TYPE "A" FINISH FOR ICE DAMMAGE, BRUSHED GLASS FINISHING OR IMPERMEABLE BRUSHED GLASS FINISHING ⑩ CONTRACTOR TO BRUSH TYPE "A" FINISH FOR ICE DAMMAGE, BRUSHED GLASS FINISHING OR IMPERMEABLE BRUSHED GLASS FINISHING ⑪ CONTRACTOR TO BRUSH TYPE "A" FINISH FOR ICE DAMMAGE, BRUSHED GLASS FINISHING OR IMPERMEABLE BRUSHED GLASS FINISHING ⑫ CONTRACTOR TO BRUSH TYPE "A" FINISH FOR ICE DAMMAGE, BRUSHED GLASS FINISHING OR IMPERMEABLE BRUSHED GLASS FINISHING ⑬ CONTRACTOR TO BRUSH TYPE "A" FINISH FOR ICE DAMMAGE, BRUSHED GLASS FINISHING OR IMPERMEABLE BRUSHED GLASS FINISHING ⑭ CONTRACTOR TO BRUSH TYPE "A" FINISH FOR ICE DAMMAGE, BRUSHED GLASS FINISHING OR IMPERMEABLE BRUSHED GLASS FINISHING ⑮ CONTRACTOR TO BRUSH TYPE "A" FINISH FOR ICE DAMMAGE, BRUSHED GLASS FINISHING OR IMPERMEABLE BRUSHED GLASS FINISHING ⑯ CONTRACTOR TO BRUSH TYPE "A" FINISH FOR ICE DAMMAGE, BRUSHED GLASS FINISHING OR IMPERMEABLE BRUSHED GLASS FINISHING ⑰ CONTRACTOR TO BRUSH TYPE "A" FINISH FOR ICE DAMMAGE, BRUSHED GLASS FINISHING OR IMPERMEABLE BRUSHED GLASS FINISHING ⑱ CONTRACTOR TO BRUSH TYPE "A" FINISH FOR ICE DAMMAGE, BRUSHED GLASS FINISHING OR IMPERMEABLE BRUSHED GLASS FINISHING ⑲ CONTRACTOR TO BRUSH TYPE "A" FINISH FOR ICE DAMMAGE, BRUSHED GLASS FINISHING OR IMPERMEABLE BRUSHED GLASS FINISHING ⑳ CONTRACTOR TO BRUSH TYPE "A" FINISH FOR ICE DAMMAGE, BRUSHED GLASS FINISHING OR IMPERMEABLE BRUSHED GLASS FINISHING ㉑ CONTRACTOR TO BRUSH TYPE "A" FINISH FOR ICE DAMMAGE, BRUSHED GLASS FINISHING OR IMPERMEABLE BRUSHED GLASS FINISHING ㉒ CONTRACTOR TO BRUSH TYPE "A" FINISH FOR ICE DAMMAGE, BRUSHED GLASS FINISHING OR IMPERMEABLE BRUSHED GLASS FINISHING ㉓ CONTRACTOR TO BRUSH TYPE "A" FINISH FOR ICE DAMMAGE, BRUSHED GLASS FINISHING OR IMPERMEABLE BRUSHED GLASS FINISHING ㉔ CONTRACTOR TO BRUSH TYPE "A" FINISH FOR ICE DAMMAGE, BRUSHED GLASS FINISHING OR IMPERMEABLE BRUSHED GLASS FINISHING ㉕ CONTRACTOR TO BRUSH TYPE "A" FINISH FOR ICE DAMMAGE, BRUSHED GLASS FINISHING OR IMPERMEABLE BRUSHED GLASS FINISHING ㉖ CONTRACTOR TO BRUSH TYPE "A" FINISH FOR ICE DAMMAGE, BRUSHED GLASS FINISHING OR IMPERMEABLE BRUSHED GLASS FINISHING ㉗ CONTRACTOR TO BRUSH TYPE "A" FINISH FOR ICE DAMMAGE, BRUSHED GLASS FINISHING OR IMPERMEABLE BRUSHED GLASS FINISHING ㉘ CONTRACTOR TO BRUSH TYPE "A" FINISH FOR ICE DAMMAGE, BRUSHED GLASS FINISHING OR IMPERMEABLE BRUSHED GLASS FINISHING ㉙ CONTRACTOR TO BRUSH TYPE "A" FINISH FOR ICE DAMMAGE, BRUSHED GLASS FINISHING OR IMPERMEABLE BRUSHED GLASS FINISHING ㉚ CONTRACTOR TO BRUSH TYPE "A" FINISH FOR ICE DAMMAGE, BRUSHED GLASS FINISHING OR IMPERMEABLE BRUSHED GLASS FINISHING ㉛ CONTRACTOR TO BRUSH TYPE "A" FINISH FOR ICE DAMMAGE, BRUSHED GLASS FINISHING OR IMPERMEABLE BRUSHED GLASS FINISHING ㉜ CONTRACTOR TO BRUSH TYPE "A" FINISH FOR ICE DAMMAGE, BRUSHED GLASS FINISHING OR IMPERMEABLE BRUSHED GLASS FINISHING ㉝ CONTRACTOR TO BRUSH TYPE "A" FINISH FOR ICE DAMMAGE, BRUSHED GLASS FINISHING OR IMPERMEABLE BRUSHED GLASS FINISHING ㉞ CONTRACTOR TO BRUSH TYPE "A" FINISH FOR ICE DAMMAGE, BRUSHED GLASS FINISHING OR IMPERMEABLE BRUSHED GLASS FINISHING ㉟ CONTRACTOR TO BRUSH TYPE "A" FINISH FOR ICE DAMMAGE, BRUSHED GLASS FINISHING OR IMPERMEABLE BRUSHED GLASS FINISHING ㊱ CONTRACTOR TO BRUSH TYPE "A" FINISH FOR ICE DAMMAGE, BRUSHED GLASS FINISHING OR IMPERMEABLE BRUSHED GLASS FINISHING ㊲ CONTRACTOR TO BRUSH TYPE "A" FINISH FOR ICE DAMMAGE, BRUSHED GLASS FINISHING OR IMPERMEABLE BRUSHED GLASS FINISHING ㊳ CONTRACTOR TO BRUSH TYPE "A" FINISH FOR ICE DAMMAGE, BRUSHED GLASS FINISHING OR IMPERMEABLE BRUSHED GLASS FINISHING ㊴ CONTRACTOR TO BRUSH TYPE "A" FINISH FOR ICE DAMMAGE, BRUSHED GLASS FINISHING OR IMPERMEABLE BRUSHED GLASS FINISHING ㊵ CONTRACTOR TO BRUSH TYPE "A" FINISH FOR ICE DAMMAGE, BRUSHED GLASS FINISHING OR IMPERMEABLE BRUSHED GLASS FINISHING ㊶ CONTRACTOR TO BRUSH TYPE "A" FINISH FOR ICE DAMMAGE, BRUSHED GLASS FINISHING OR IMPERMEABLE BRUSHED GLASS FINISHING ㊷ CONTRACTOR TO BRUSH TYPE "A" FINISH FOR ICE DAMMAGE, BRUSHED GLASS FINISHING OR IMPERMEABLE BRUSHED GLASS FINISHING ㊸ CONTRACTOR TO BRUSH TYPE "A" FINISH FOR ICE DAMMAGE, BRUSHED GLASS FINISHING OR IMPERMEABLE BRUSHED GLASS FINISHING ㊹ CONTRACTOR TO BRUSH TYPE "A" FINISH FOR ICE DAMMAGE, BRUSHED GLASS FINISHING OR IMPERMEABLE BRUSHED GLASS FINISHING ㊺ CONTRACTOR TO BRUSH TYPE "A" FINISH FOR ICE DAMMAGE, BRUSHED GLASS FINISHING OR IMPERMEABLE BRUSHED GLASS FINISHING ㊻ CONTRACTOR TO BRUSH TYPE "A" FINISH FOR ICE DAMMAGE, BRUSHED GLASS FINISHING OR IMPERMEABLE BRUSHED GLASS FINISHING ㊼ CONTRACTOR TO BRUSH TYPE "A" FINISH FOR ICE DAMMAGE, BRUSHED GLASS FINISHING OR IMPERMEABLE BRUSHED GLASS FINISHING ㊽ CONTRACTOR TO BRUSH TYPE "A" FINISH FOR ICE DAMMAGE, BRUSHED GLASS FINISHING OR IMPERMEABLE BRUSHED GLASS FINISHING ㊾ CONTRACTOR TO BRUSH TYPE "A" FINISH FOR ICE DAMMAGE, BRUSHED GLASS FINISHING OR IMPERMEABLE BRUSHED GLASS FINISHING ㊿ CONTRACTOR TO BRUSH TYPE "A" FINISH FOR ICE DAMMAGE, BRUSHED GLASS FINISHING OR IMPERMEABLE BRUSHED GLASS FINISHING

Design + Solutions

2014 H. CARROLL GERRITSON
1000 TEXAS STREET
DALLAS, TEXAS 75202
7.24.16 TEL 972

STATE OF TEXAS
PROFESSIONAL ENGINEER
JAMES R. GIBSON
1000 TEXAS STREET
DALLAS, TEXAS 75202
7.24.16 TEL 972

ARCHITECT, PLANNING & INTERIOR DESIGN
 JAMES R. GIBSON
 ARCHITECTURAL ENGINEERING
 1000 TEXAS STREET
 DALLAS, TEXAS 75202
 7.24.16 TEL 972

PROJECT NAME
**TENANT IMPROVEMENT PROJECT
 EXECUTIVE OFFICE SUITE
 8195 CUSTER ROAD SUITE 200A
 FRISCO, TEXAS 75035**

NO. OF SHEETS	004-29
NO. OF SHEETS USED	01
DATE	12/15/2022

PROJECT NO: 004-29
 PROJECT MOD: 01
 DESIGNER: 02
 DATE: 12/15/2022

01 FLOOR PLAN